

November 10, 2015

Ms. Kimberly D. Bose, Secretary
Federal Energy Regulatory Commission
888 First Street, NE
Washington, DC 20426

Re: *Sabal Trail Transmission, LLC*, Docket No. CP15-17-000
Errata to November 9, 2015 Response to Comments on the DEIS

Dear Ms. Bose:

On November 9, 2015, Sabal Trail filed its Response to Comments on the Draft Environmental Impact Statement (“DEIS”) addressing certain of the comments received on the DEIS for the Southeast Market Pipelines Project (“November 9 Response”). Attachment A to the November 9 Response contained horizontal direction drill (“HDD”) site plans and profiles for the Suwanee River crossing and the Santa Fe River crossing. Sabal Trail inadvertently attached the incorrect site plan and profile for the Suwanee River HDD. Submitted herewith as errata to that filing is the correct site plan and profile for the Suwanee River HDD for Attachment A to the November 9 Response.¹

If you have any questions regarding this filing, please contact me at (713) 627-4102 or David A. Alonzo, Manager, Certificates and Reporting at (713) 627-4957.

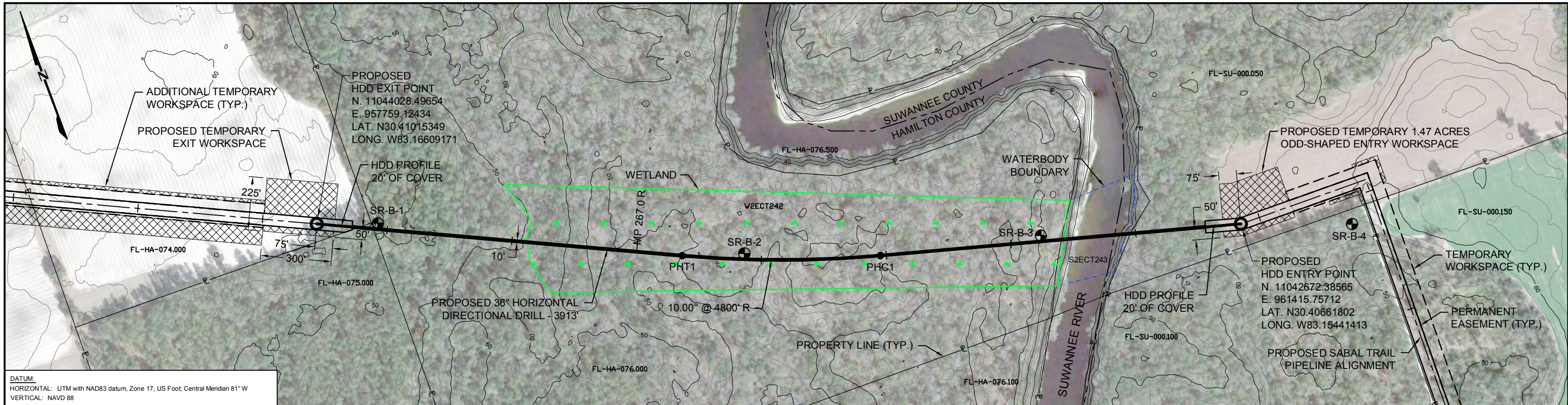
Sincerely,

Sabal Trail Transmission, LLC
By: Sabal Trail Management, LLC,
Its Operator

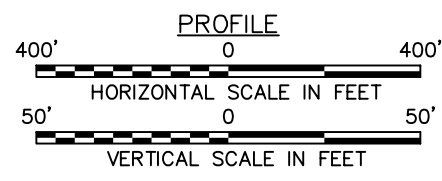
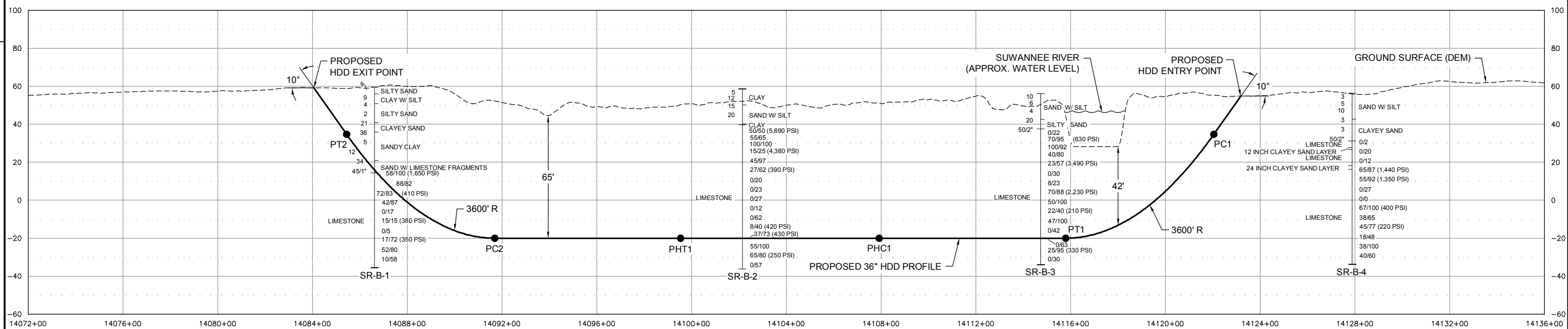
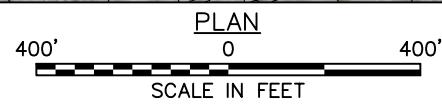
/s/ Lisa A. Connolly
Lisa A. Connolly, General Manager
Rates and Certificates

cc: John Peconom (FERC)
Jim Martin (FERC)
All Parties (CP15-17-000)

¹ The site plan and profile for the Suwanee River HDD included herewith was also filed with the Commission in Sabal Trail’s Supplemental Information Filing submitted on February 20, 2015 in FERC Docket No. CP15-17-000.



DATUM:
 HORIZONTAL: UTM with NAD83 datum, Zone 17, US Foot; Central Meridian 81° W
 VERTICAL: NAVD 88



LEGEND:

- SPT (N) TYPE OF SOIL
- TYPE OF ROCK RQD/%REC (UC)
- ⊕ Boring Location
- Major Contour - 10' Interval
- - - Minor Contour - 2' Interval

ISSUED FOR PERMITTING

**DISCLAIMER: FOR FERC FINAL SUBMITTAL.
 THIS DRAWING IS NOT INTENDED FOR CONSTRUCTION.**

- Notes:
- The locations of all features shown are approximate.
 - This drawing is for information purposes. It is intended to assist in showing features discussed in an attached document. GeoEngineers, Inc. can not guarantee the accuracy and content of electronic files. The master file is stored by GeoEngineers, Inc. and will serve as the official record of this communication.
 - Refer to the boring logs in the accompanying report for more detailed soil descriptions.
 - The utilities shown on the drawing are based on survey data provided by Gulf Interstate Engineering. GeoEngineers, Inc. has not verified the field location of the existing utilities.

Reference: Aerial image taken from Google Earth Pro, licensed to GeoEngineers, Inc., image dated 01/24/14. Ground surface DEM (1/9 Arc Second) downloaded from <http://viewer.nationalmap.gov/viewer/>.



**SABAL TRAIL TRANSMISSION
 PROPOSED 36" PIPELINE
 SITE PLAN AND PROFILE
 SUWANNEE RIVER HDD**

DRAWN BY: MWC	DATE: 09/23/14	
CHECKED BY: MAM	DATE: 12/05/14	
SCALE:	W.O.:	
1 ISSUED FOR PERMITTING	02/16/15	
0 ISSUED FOR PERMITTING	12/19/14	
REV.	DESCRIPTION	DATE

HAMILTON & SUWANNEE COUNTIES		FLORIDA
DRAWING NUMBER: 1657-PL-DG-30826	SHEET NO. -	REV. 1